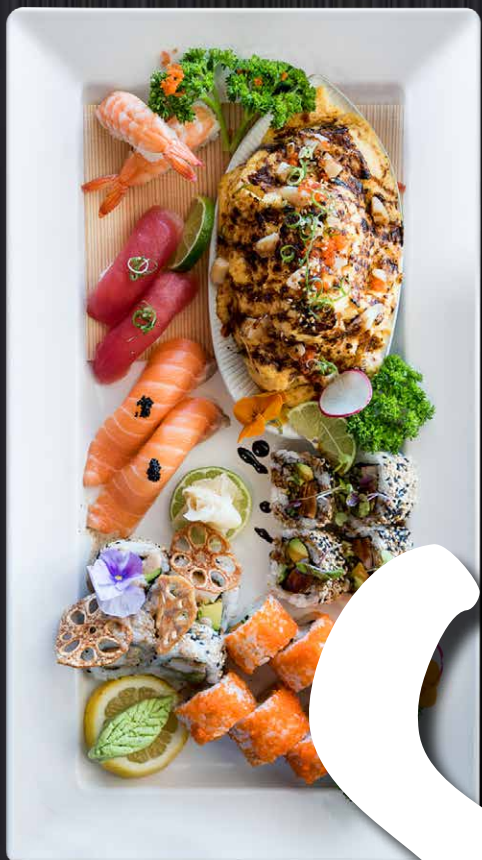


it's
back!



ALL YOU CAN EAT. Sushi

\$35
per person

We've had endless calls and requests, so come and enjoy our **NEW AYCE Sushi**

Including Kobe's famous No1 Special and our chefs daily hand rolls on arrival followed by all you can eat sushi platters including our famous volcano roll.

Every one that eats pays and no takeaways. Available Monday to Friday.



So get the gang together and book now!

BOOK ONLINE

